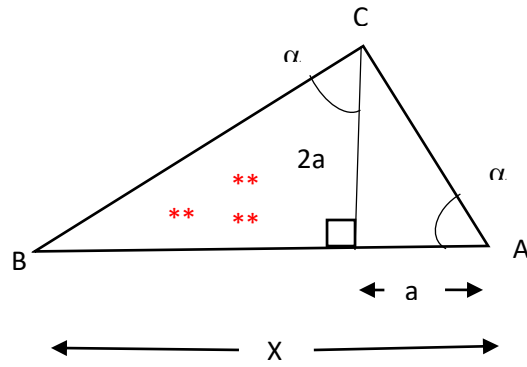


Trigo and Geometry



The angle C is 90°

$$\operatorname{tg} \alpha = \frac{2a}{a} = 2$$

$$\operatorname{tg} \alpha = \frac{x-a}{2a}$$

$$\frac{x-a}{2a} = 2$$

$$x - a = 4a$$

$$x = 5a$$

Prove that

$$AC = \sqrt{5} a$$

$$BC = 2 \sqrt{5} a$$

$$\frac{BC}{AC} = ?$$