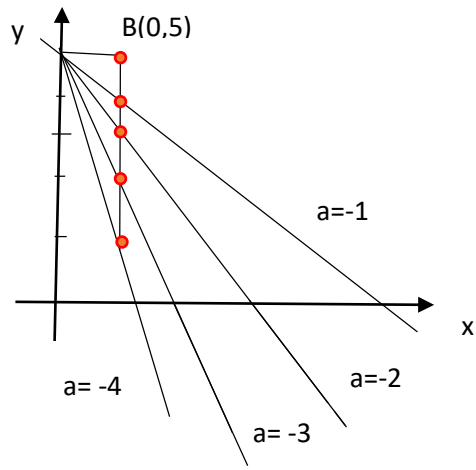


Line , Slope



$$B(0,5) \quad a = -1$$

$$y - 5 = -1 \cdot x \Rightarrow y = -x + 5$$

$$B(0,5) \quad a = -2$$

$$y - 5 = -2 \cdot x \Rightarrow y = -2x + 5$$

$$B(0,5) \quad a = -3$$

$$y - 5 = -3 \cdot x \Rightarrow y = -3x + 5$$

$$B(0,5) \quad a = -4$$

$$y - 5 = -4 \cdot x \Rightarrow y = -4x + 5$$