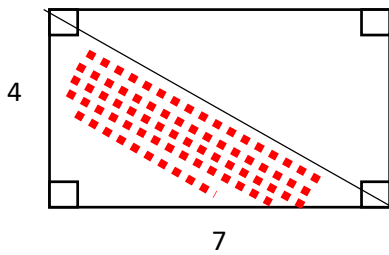


Area – Geometry

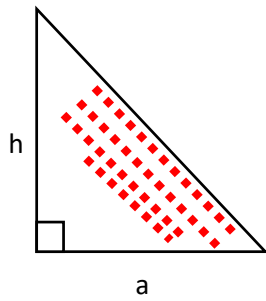


Rectangular

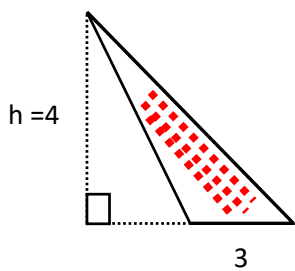
$$\text{Area} \Rightarrow 4 \times 7 = 28$$

When we want area of triangular

$$A = \frac{4 \times 7}{2} = 14$$

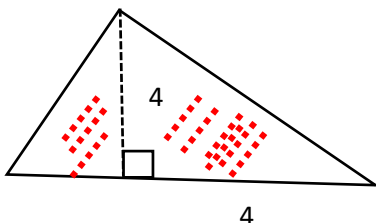


$$S = \frac{ah}{2}$$



$$S = \frac{5.4}{2} - \frac{2.4}{2}$$

$$\text{Or} \Rightarrow S = \frac{3.4}{2} = 6$$



$$S = \frac{2.4}{2} + \frac{4.4}{2} = \frac{6.4}{2} = 12$$